

Elisha Hewgill

From: Laura Warner <lwarner@grandriver.ca>
Sent: July 14, 2020 10:51 AM
To: Elisha Hewgill
Subject: RE: B3-20 Revised Notice of Public Meeting
Attachments: 150 Main St West_Map.pdf

Hi Elisha,

The GRCA has no objection to the consent application B3-20 as the property at 150 Main St West does not contain any features regulated by the GRCA. Our mapping is attached for reference.

Kind regards,
Laura



Laura Warner | Resource Planner
Grand River Conservation Authority
400 Clyde Road, Cambridge ON N1R 5W6
P: (519) 621-2763 x 2231 | F: (519) 621-4844
lwarner@grandriver.ca | www.grandriver.ca

From: Elisha Hewgill <ehewgill@southgate.ca>
Sent: Tuesday, July 14, 2020 9:32 AM
To: Bell Canada ROWCC <rowcentre@bell.ca>; Bev Fisher <bfisher@southgate.ca>; Bluewater District School Board <shelley_crummer@bwdsb.on.ca>; Bluewater District School Board <jayme_bastarache@bwdsb.on.ca>; Bruce Grey Catholic School Board <al_hastie@bgcdsb.org>; Clinton Stredwick <cstredwick@southgate.ca>; Dave Milliner <dmilliner@southgate.ca>; Enbridge Gas <municipalplanning@enbridge.com>; Fire Chief <firechief@southgate.ca>; Group: Planning Dept Emails <Group_PlanningDeptEmails@grey.ca>; Haudenosaunee Development Institute <hdi2@bellnet.ca>; Historic Saugeen Metis <hsmasstlrc@bmts.com>; Hydro One <landuseplanning@hydroone.com>; Jim Ellis <jellis@southgate.ca>; Kevin Green <kgreen@southgate.ca>; Krista Youngblood <k.youngblood@publichealthgreybruce.on.ca>; Library <library@southgate.ca>; Laura Warner <lwarner@grandriver.ca>; Martin Leyten - MTO <Martin.Leyten@ontario.ca>; Metis Nation of Ontario <consultations@metisnation.org>; MMAH <Tyler.Shantz@ontario.ca>; Ontario Power Generation <Executivevp.lawanddevelopment@opg.com>; Saugeen Ojibway Nation <execassistant@saugeenojibwaynation.ca>; Six Nations of the Grand River <lonnybomberry@sixnations.ca>; Union Gas <ontugllandsinq@uniongas.com>; William Gott <wgott@southgate.ca>; WSP on behalf of Bell <circulations@wsp.com>
Cc: Clinton Stredwick <cstredwick@southgate.ca>; Lindsey Green <lgreen@southgate.ca>
Subject: B3-20 Revised Notice of Public Meeting

Good Morning,

Please find the below link for the **Revised Notice of Public Hearing – Rescheduled Hearing Date** for Consent Application B3-20.

<https://www.southgate.ca/en/municipal-services/planning-applications-public-notices.aspx#B3-20-William-Penney>

The hearing has been rescheduled for **August 26, 2020**. Comments will be received on the above notification up until the hearing date, but if possible, please forward by **August 19, 2020** for inclusion on the public agenda.

Comments can be received by:

Email: ehewgill@southgate.ca

Fax: 519-923-9262 Attn: Elisha Hewgill

Mail: Elisha Hewgill, Secretary-Treasurer
185667 Grey County Road 9
Dundalk, ON N0C 1B0

Thank you for your attention to this matter.

Elisha Hewgill

Administrative & Legislative Assistant

Township of Southgate

📍 185667 Grey County Rd. 9, Dundalk, ON N0C 1B0

☎ 519-923-2110 ext. 232 | Fax 519-923-9262

ehewgill@southgate.ca | www.southgate.ca





Grand River Conservation Authority

Date: Jul 14, 2020

Author: LW

150 Main St West



Legend

- Regulation Limit (GRCA)
- Regulated Watercourse (GRCA)
- Regulated Waterbody (GRCA)
- Wetland (GRCA)
- Floodplain (GRCA)
 - Engineered
 - Estimated
 - Approximate
 - Special Policy Area
- Slope Valley (GRCA)
 - Steep
 - Oversteep
 - Steep
- Slope Erosion (GRCA)
 - Oversteep
 - Toe
- Lake Erie Flood (GRCA)
- Lake Erie Shoreline Reach (GRCA)
- Lake Erie Dynamic Beach (GRCA)
- Lake Erie Erosion (GRCA)
- Parcel - Assessment (MPAC/MNRF)

This legend is static and may not fully reflect the layers shown on the map. The text of Ontario Regulation 150/06 supercedes the mapping as represented by these layers.

Copyright Grand River Conservation Authority, 2020.

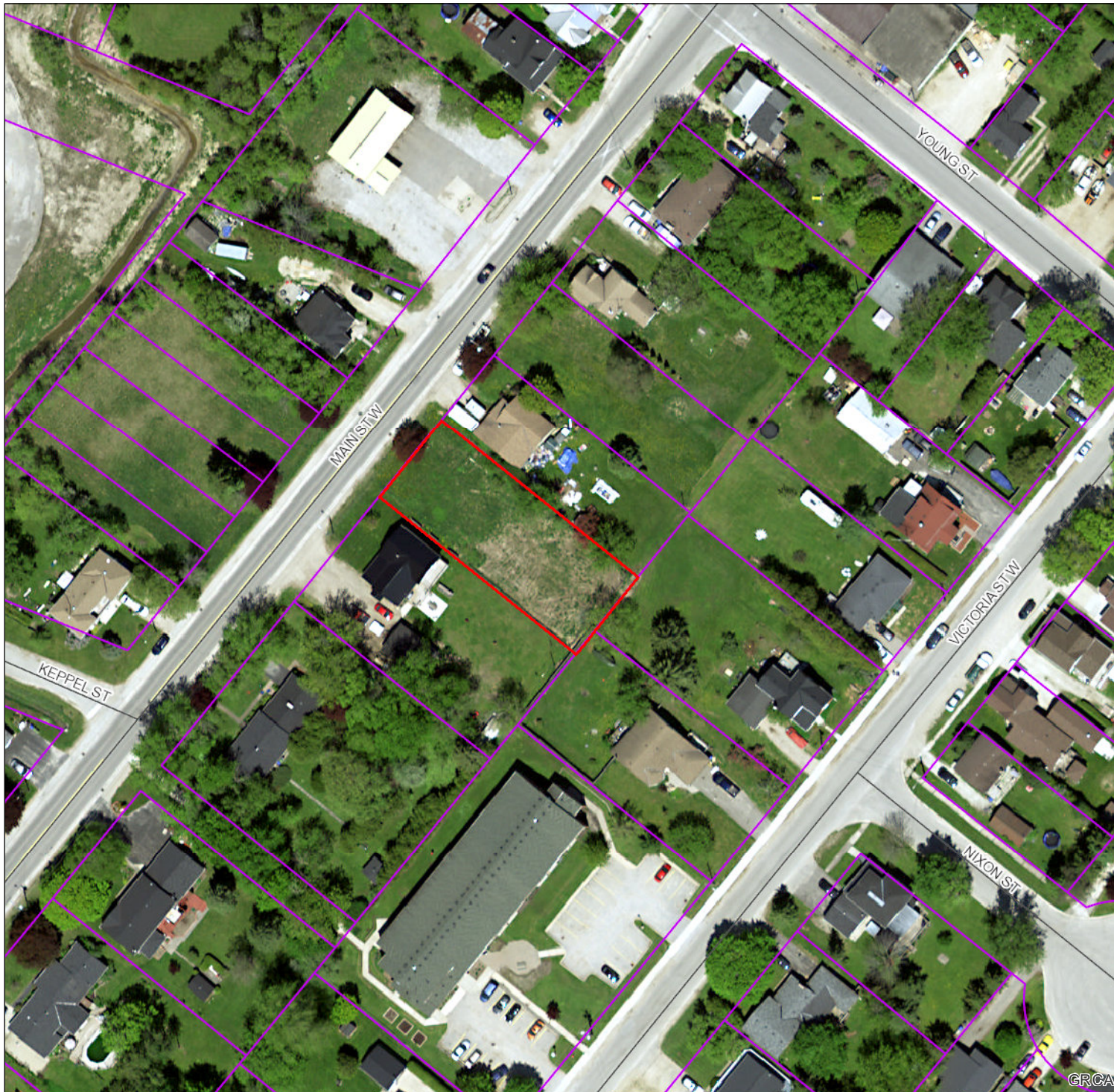
Disclaimer: This map is for illustrative purposes only. Information contained herein is not a substitute for professional review or a site survey and is subject to change without notice. The Grand River Conservation Authority takes no responsibility for, nor guarantees, the accuracy of the information contained on this map. Any interpretations or conclusions drawn from this map are the sole responsibility of the user.

The source for each data layer is shown in parentheses in the map legend. For a complete listing of sources and citations go to: <https://maps.grandriver.ca/Sources-and-Citations.pdf>

0 5 10 20 30 Metres

NAD 1983 UTM Zone 17N

Scale: 1,156



Map Centre (UTM NAD83 z17): 548,424.94 4,890,531.81

This map is not to be used for navigation | 2015 Ortho (ON)