

# GREY COMMON ELEMENTS CONDOMINIUM PLAN NO. 93

## LEVEL 1

REGISTERED IN THE LAND REGISTRY OFFICE FOR THE LAND TITLES DIVISION  
OF GREY (No. 16) AT 15:21 O'CLOCK ON THE 12  
DAY OF December, 2011.

*A. Novak*  
REPRESENTATIVE FOR LAND REGISTRAR

## SURVEYOR'S CERTIFICATE

I CERTIFY THAT:  
1. THIS SURVEY AND PLAN ARE CORRECT AND IN ACCORDANCE WITH THE  
CONDOMINIUM ACT, 1998, THE SURVEYS ACT, THE SURVEYORS ACT AND  
THE LAND TITLES AND THE REGULATIONS MADE UNDER THEM.  
2. THE SURVEY WAS COMPLETED ON THE 20th DAY OF JUNE, 2011.

November 4, 2011  
DATED

*Ronald F. Dore*  
RONALD F. DORE  
ONTARIO LAND SURVEYOR

DECLARATION REGISTERED AS No. G457181

THIS PLAN COMPRISES ALL OF PIN 37287-0249 (LT)  
AND PIN 37287-0250 (LT).

SCHEDULE OF APPURTENANT AND SERVIENT INTERESTS  
(PURSUANT TO CLAUSES 157 (1) (d) AND (e) OF THE CONDOMINIUM ACT, 1998)

SUBJECT TO (SERVIENT INTERESTS)	PART	REGISTERED PLAN	DESCRIBED IN	NOTES
				N/A

PLAN OF SURVEY  
OF

## BLOCKS 10 AND 11 REGISTERED PLAN 16M-35

GEOGRAPHIC OF TOWNSHIP OF EGREMONT  
TOWNSHIP OF SOUTHGATE  
COUNTY OF GREY

R. F. DORE SURVEYING LTD.

SCALE 1:1000

0 5 10 20 30 40 METRES

## LEGEND

■ FOUND  
□ PLANTED  
SIB STANDARD IRON BAR  
IB IRON BAR  
SSIB SHORT STANDARD IRON BAR  
1661 R. F. DORE, O.L.S.  
ZUBO ZUBER, EMO & PATTEN LTD.  
M, Meas MEASURED  
EGR EAST OF THE GARAFRAXA ROAD  
ALL MONUMENTS ARE 1661 UNLESS NOTED OTHERWISE

## NOTE

UTM GRID BEARING, DERIVED FROM OBSERVED REFERENCE POINTS A AND B,  
BY REAL TIME NETWORK (RTN) OBSERVATIONS, UTM ZONE 17, NAD83 (CSRS) (1997.0)  
HAVING A GRID BEARING OF N9°29'35"W

DISTANCES ARE GROUND AND CAN BE CONVERTED TO GRID BY MULTIPLYING BY  
A COMBINED SCALE FACTOR OF 0.99973.

FOR BEARING COMPARISONS, A ROTATION OF 0°22'00" (COUNTER-CLOCKWISE) CAN BE  
APPLIED TO BEARINGS FROM PLAN 16R-9980 AND PLAN 16M-35.

OBSERVED REFERENCE POINTS (ORPs): UTM ZONE 17, NAD83 (CSRS) (1997.0).  
COORDINATES TO RURAL ACCURACY PER SEC. 14 (2) OF OREG. 216/10

POINT ID	NORTHING	EASTING
ORP A	4 873 152.8	521 772.6
ORP B	4 873 411.8	521 729.3

COORDINATES CANNOT, IN THEMSELVES, BE USED TO RE-ESTABLISH  
CORNERS OR BOUNDARIES SHOWN ON THIS PLAN.

## CERTIFICATE OF DECLARANT

THIS TO CERTIFY THAT THE PROPERTY INCLUDED IN THIS PLAN  
HAS BEEN LAID OUT INTO COMMON ELEMENTS IN ACCORDANCE WITH OUR  
INSTRUCTIONS.

DECLARANT:

1530999 ONTARIO LIMITED

DATED AT KINCARDINE THIS 28 DAY OF November, 2011.

*Robert Harris*  
ROBERT HARRIS

I HAVE THE AUTHORITY TO BIND THE CORPORATION.

THIS FINAL CONDOMINIUM PLAN IS APPROVED UNDER THE  
CONDOMINIUM ACT BY THE COUNTY OF GREY, AS PER SEC 9(7) AND EXEMPTED  
UNDER SECTION 51(50) OF THE PLANNING ACT, RSO 1990 AS AMENDED.

DATED THIS 1 DAY OF December, 2011.

*Ray S.*  
DIRECTOR OF PLANNING & DEVELOPMENT,  
COUNTY OF GREY

R. F. DORE SURVEYING LTD.

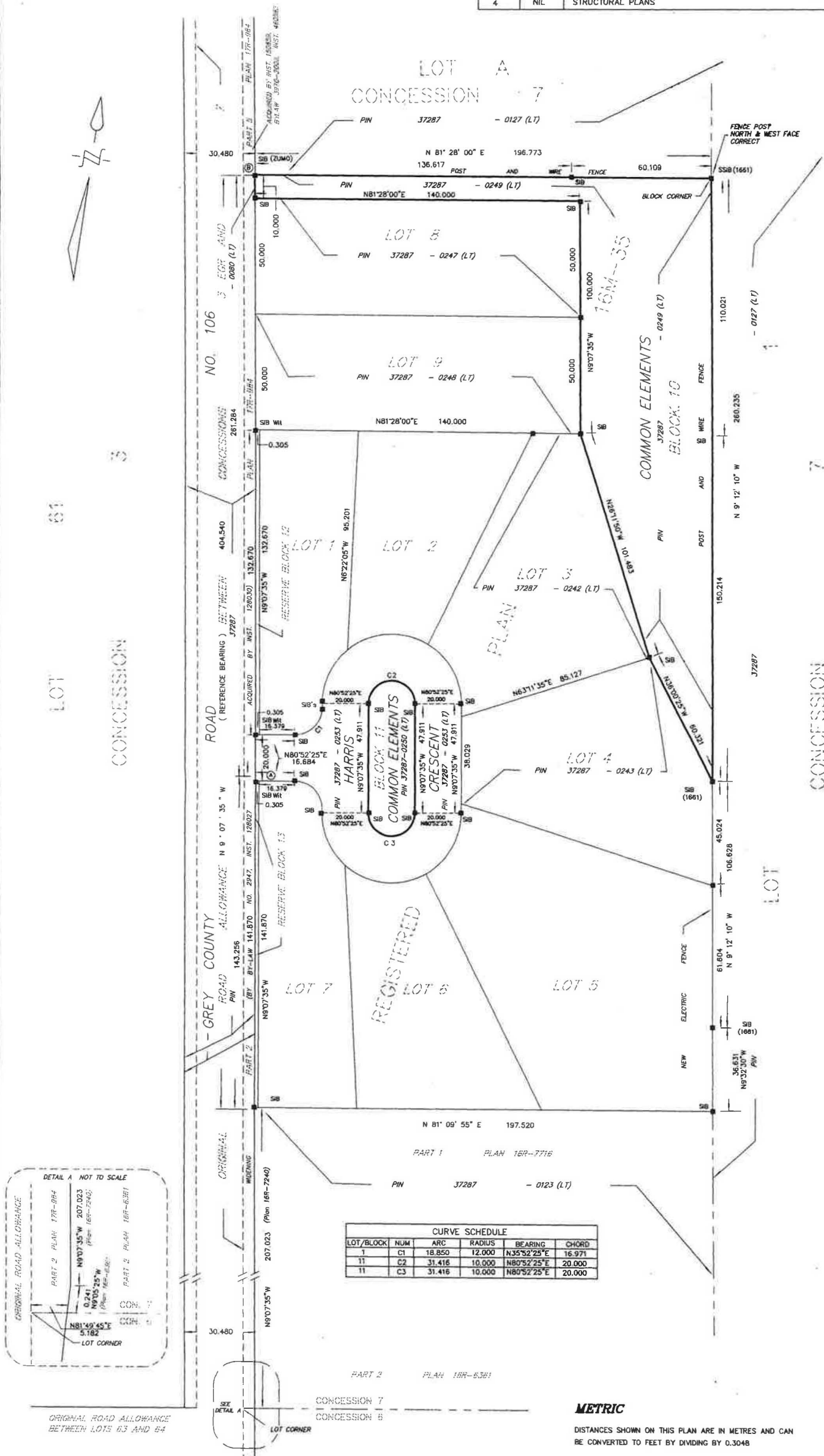
ONTARIO LAND SURVEYOR  
932 QUEEN STREET, KINCARDINE, ONTARIO  
N2Z 2Y9  
(519) 396-3484

*RD*  
O.L.S.

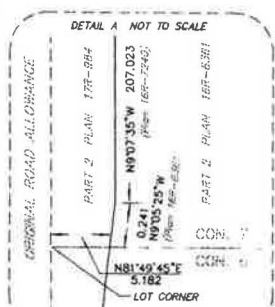
SCALE: 1:1000

FILE NO. 107247 C

INDEX OF PARTS		
PART	SHEET	DESCRIPTION
1	1	PLAN OF SURVEY OF THE CONDOMINIUM PROPERTY, THE DESIGNATION OF COMMON ELEMENTS ON LEVEL 1, ILLUSTRATION OF THE SERVIENT INTERESTS.
2	NIL	PLAN OF SURVEY OF THE EXCLUSIVE USE PORTIONS
3	NIL	ARCHITECTURAL PLANS
4	NIL	STRUCTURAL PLANS



CURVE SCHEDULE					
LOT/BLOCK	NUM	ARC	RADIUS	BEARING	CHORD
1	C1	18.850	12.000	N35°52'25"E	16.971
11	C2	31.416	10.000	N80°52'25"E	20.000
11	C3	31.416	10.000	N80°52'25"E	20.000



ORIGINAL ROAD ALLOWANCE  
BETWEEN LOTS 63 AND 64

## METRIC

DISTANCES SHOWN ON THIS PLAN ARE IN METRES AND CAN  
BE CONVERTED TO FEET BY DIVIDING BY 0.3048