



Draft Climate Change Action Plan

Southgate Council
December 1, 2021

Climate change is here, now.



“Code Red for humanity”

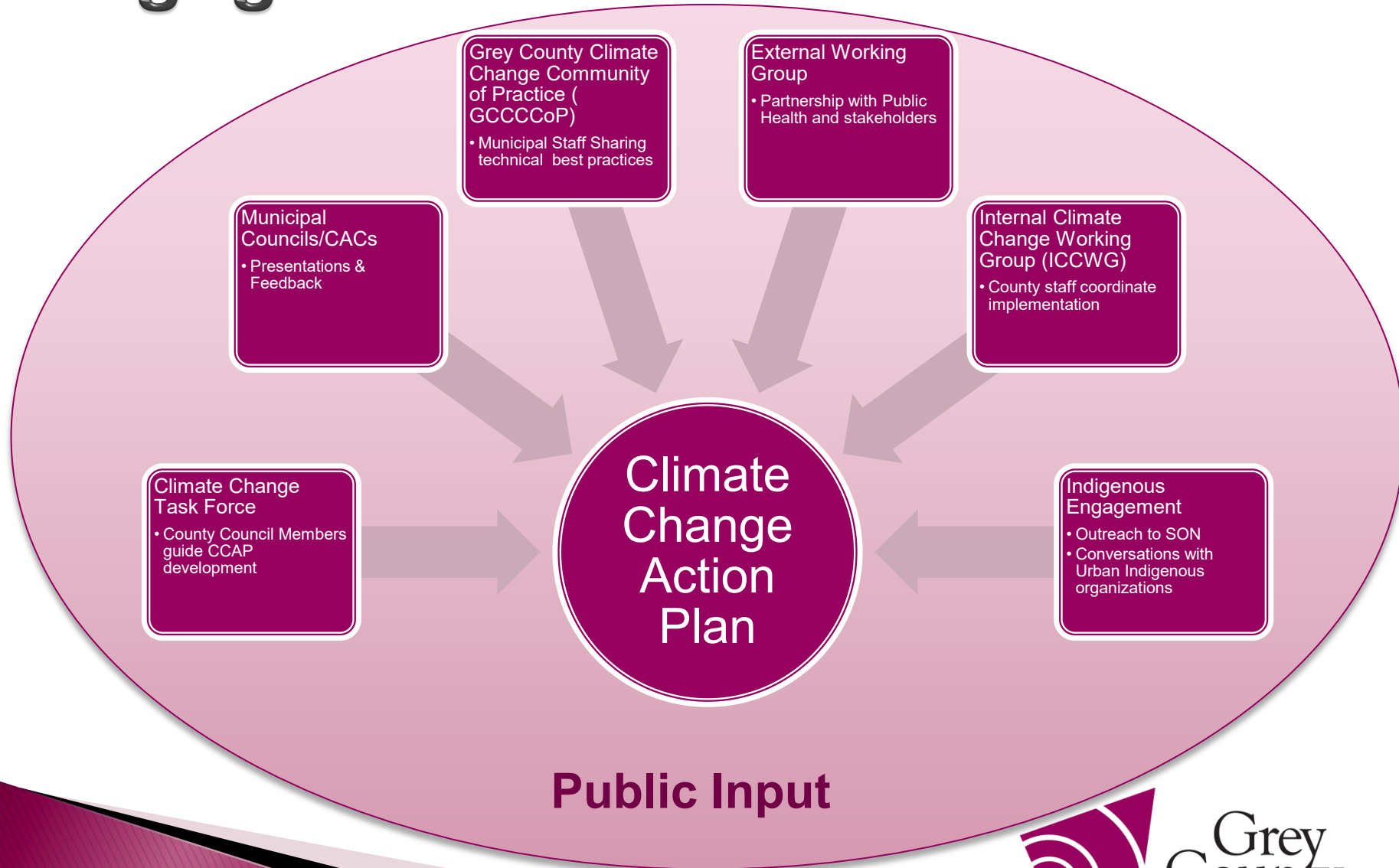
Vision Statement

The County of Grey is a clear and visible climate leader; taking actions to address climate change throughout municipal operations and in the community. By embracing energy conservation, innovative solutions, promoting awareness, and working with residents and businesses, the County is creating a more prosperous, sustainable, and healthier future in Grey that is equitable, accessible, and inclusive of urban and rural lifestyles.

What's happened so far?

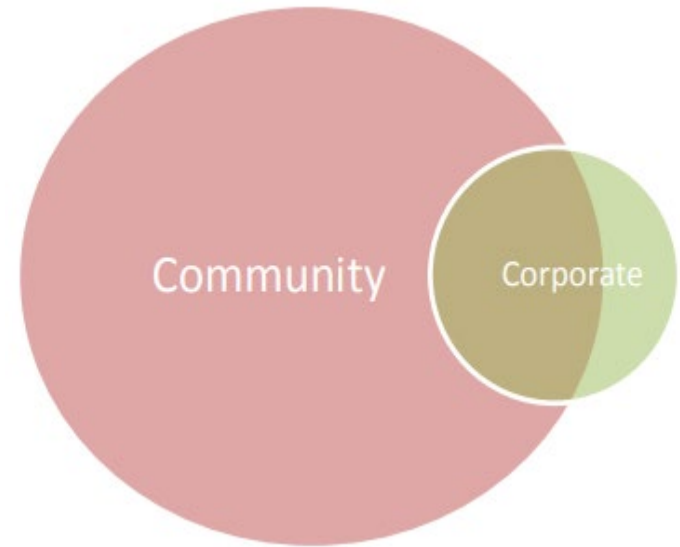


Engagement Process



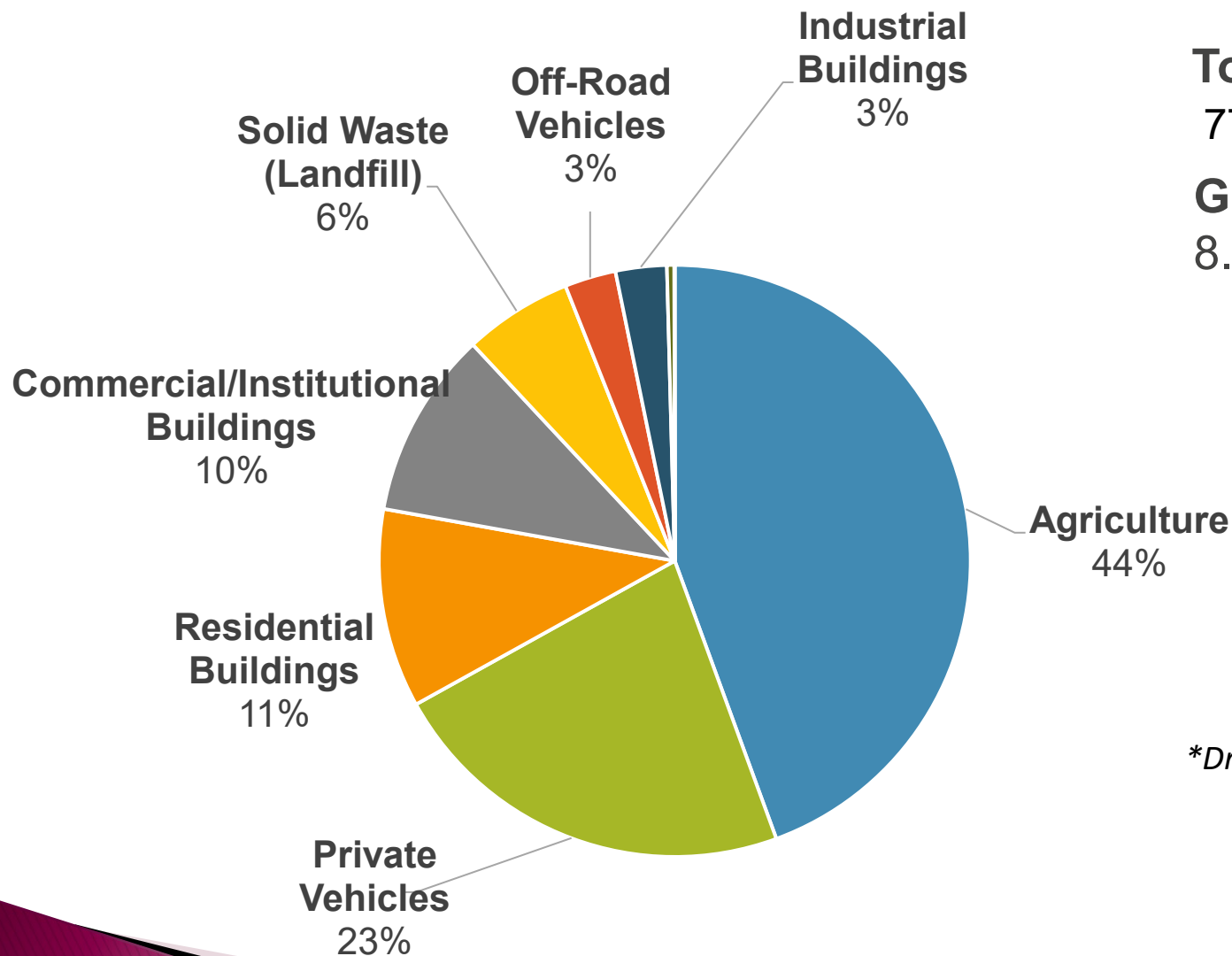
Two Types of GHG Inventories

- ▶ A **community** inventory captures the GHG emissions produced from key sectors and activities within the community as a whole
- ▶ A **corporate** inventory captures the GHG emissions associated with a local government's operations and services



Community GHG Emissions

2018 Baseline



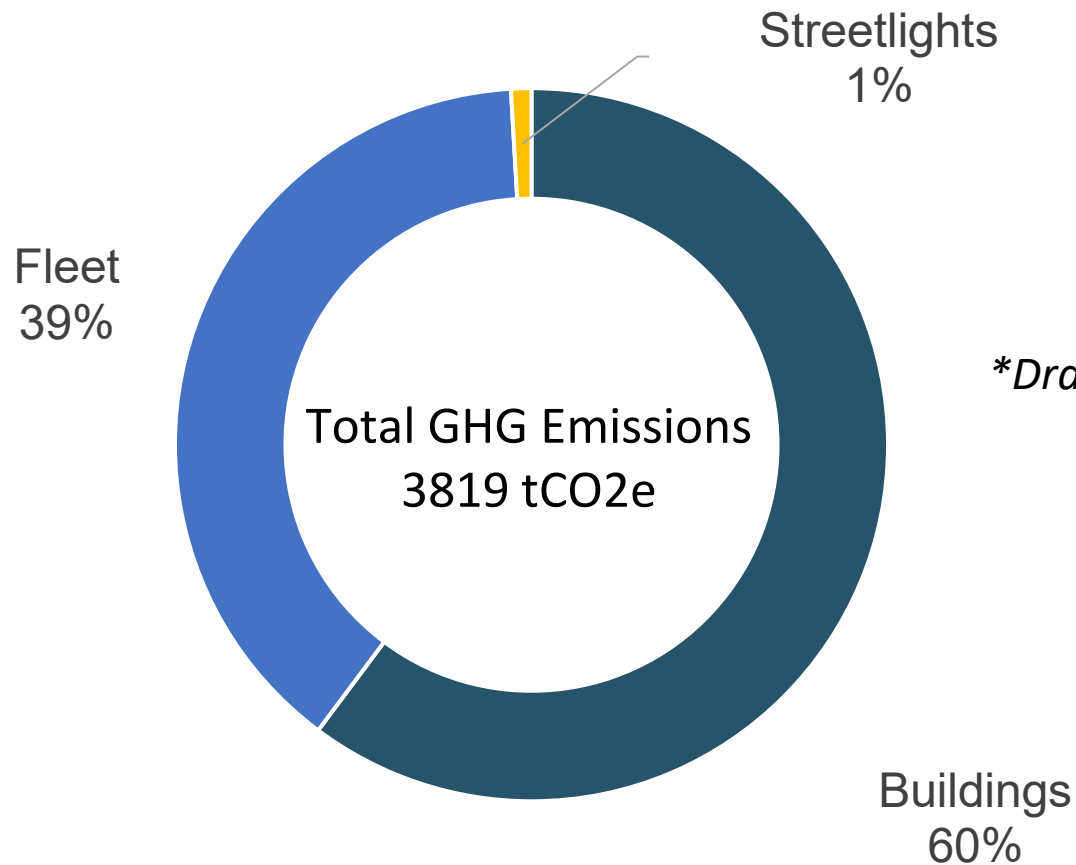
Total Emissions:
773,527 tCO₂e

GHG per person:
8.01 tCO₂e

**Draft and subject to change*

County Corporate GHG Emissions

2018 Baseline



**Draft and subject to change*

Draft and subject to change

What are others doing?

Municipality	Corporate	Community
Grey County (draft)	20% below 2018 by 2030 60% below 2018 by 2050	15% below 2018 by 2030 50% below 2018 by 2050
Dufferin County	Plan under development	10% below 2016 by 2030 40% below 2016 by 2040 Net-Zero by 2050
Wellington County	10% below 2017 by 2030 80% below 2017 by 2050 Ultimately Net-Zero	6% below 2017 by 2030 80% below 2017 by 2050 Ultimately Net-Zero
Blue Mountains	--	6% below 2005 by 2016 30% below 2005 by 2025 80% below 2005 by 2050
Oxford County	69% below 2015 by 2050	47% below 2016 by 2050 (100% renewable by 2050)

Federal Target: 40-45% below 2005 by 2030, and net-zero by 2050

IPCC Target: 45% below 2010 by 2030, and 90% below 2010 by 2050.

Climate Change Action Plan – Community Strategies

BUILDINGS

TRANSPORTATION

WASTE

AGRICULTURE

LAND USE

ENERGY

PROTECTION OF
WATERWAYS AND
SHORELINES

Climate Change Action Plan – Corporate Strategies

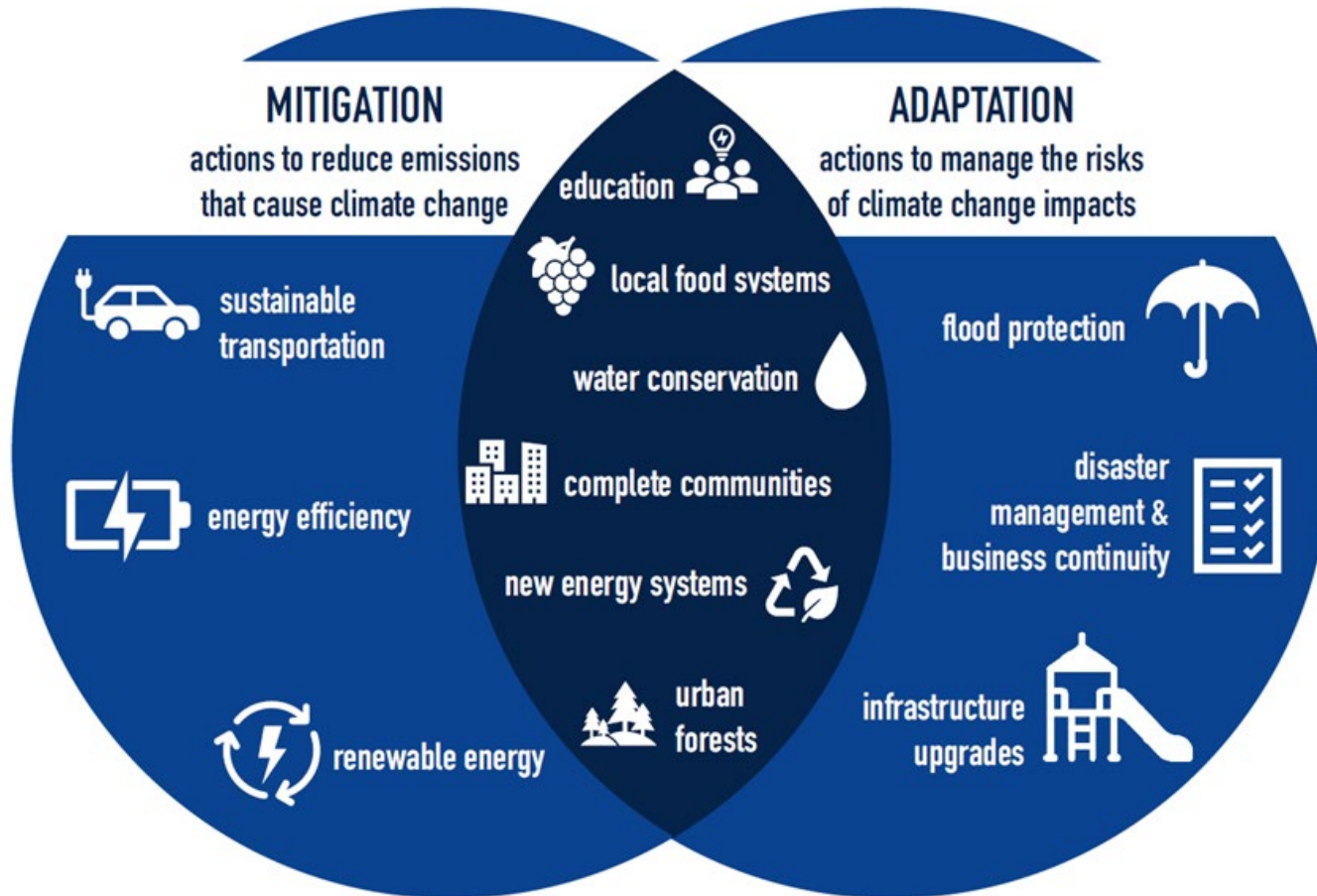
STATIONARY
ENERGY

VEHICLE FLEET
& EQUIPMENT

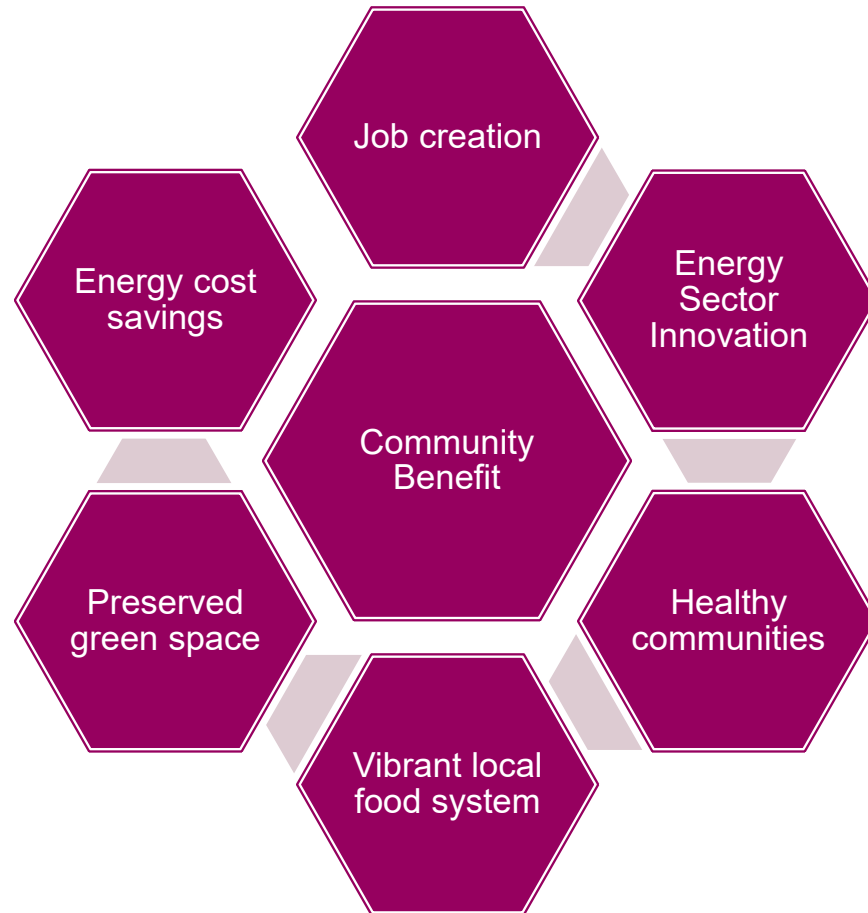
WASTE

MUNICIPAL
CULTURE

Strategy #21: Create an Adaptation Plan



Deliver Benefits to the Community



Centre Indigenous Knowledge

“Inherently built upon and grounded in generations of place-based observations and experiences, Indigenous knowledge systems are central to a thorough understanding of how people perceive, understand, mitigate, and adapt to climate change . During the implementation phase of this plan, Grey County will seek to build a trusted partnership with the Indigenous communities and organizations located within the County to ensure their feedback and knowledge is integrated into the Plan, and to garner their support in implementing a number of the strategies within with CCAP. Building on this partnership ensures that we can better consider and integrate Indigenous perspectives, cultural values, and knowledge into the planning and implementation of climate change mitigation activities into the long-term.”

Timelines



December

- “What We Heard” Summary Report
- Update draft CCAP



November

- Public and Stakeholder meetings
- Update growth projections
- Explore NZ levels of ambition
- External working group



October

- GC Internal Working Group
- GC CC CoP
- Public Meetings
- Public & Stakeholder meetings

Thank you!

Linda Swanston
Manager, Climate Change Initiatives
Linda.Swanston@grey.ca

