



Grand River Conservation Authority

Date: Jul 11, 2022

Author: CL

ARN 420711000137700



Legend

- Regulation Limit (GRCA)
- Regulated Watercourse (GRCA)
- Regulated Waterbody (GRCA)
- Wetland (GRCA)
- Floodplain (GRCA)
 - Engineered
 - Estimated
 - Approximate
 - Special Policy Area
- Slope Valley (GRCA)
 - Steep
 - Oversteep
 - Steep
- Slope Erosion (GRCA)
 - Oversteep
 - Toe
- Lake Erie Flood (GRCA)
- Lake Erie Shoreline Reach (GRCA)
- Lake Erie Dynamic Beach (GRCA)
- Lake Erie Erosion (GRCA)
- Parcel - Assessment (MPAC/MNRF)

This legend is static and may not fully reflect the layers shown on the map. The text of Ontario Regulation 150/06 supercedes the mapping as represented by these layers.

Copyright Grand River Conservation Authority, 2022.

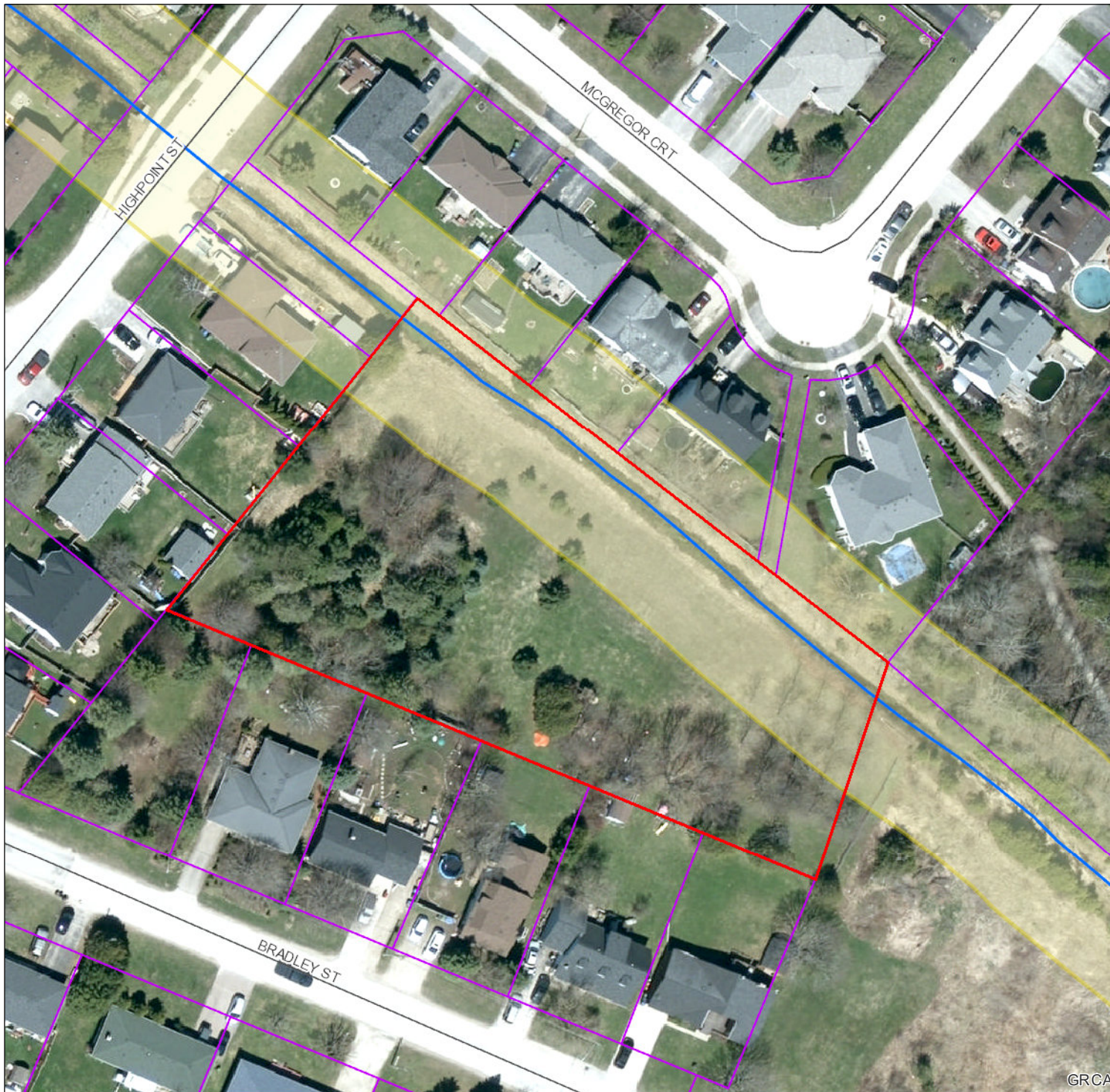
Disclaimer: This map is for illustrative purposes only. Information contained herein is not a substitute for professional review or a site survey and is subject to change without notice. The Grand River Conservation Authority takes no responsibility for, nor guarantees, the accuracy of the information contained on this map. Any interpretations or conclusions drawn from this map are the sole responsibility of the user.

The source for each data layer is shown in parentheses in the map legend. For a complete listing of sources and citations go to: <https://maps.grandriver.ca/Sources-and-Citations.pdf>



NAD 1983 UTM Zone 17N

Scale: 907



Map Centre (UTM NAD83 z17): 548,448.00 4,891,225.98

This map is not to be used for navigation | 2020 Ortho (ON)

GRCA